

The background is a light brown wooden plank texture. It is decorated with various autumn-themed illustrations: red maple leaves, orange and yellow leaves, green leaves, brown acorns, and small black berries on orange stems. The text is centered on the page.

GNOMES D'AUTOMNE

ACTIVITÉ À IMPRIMER

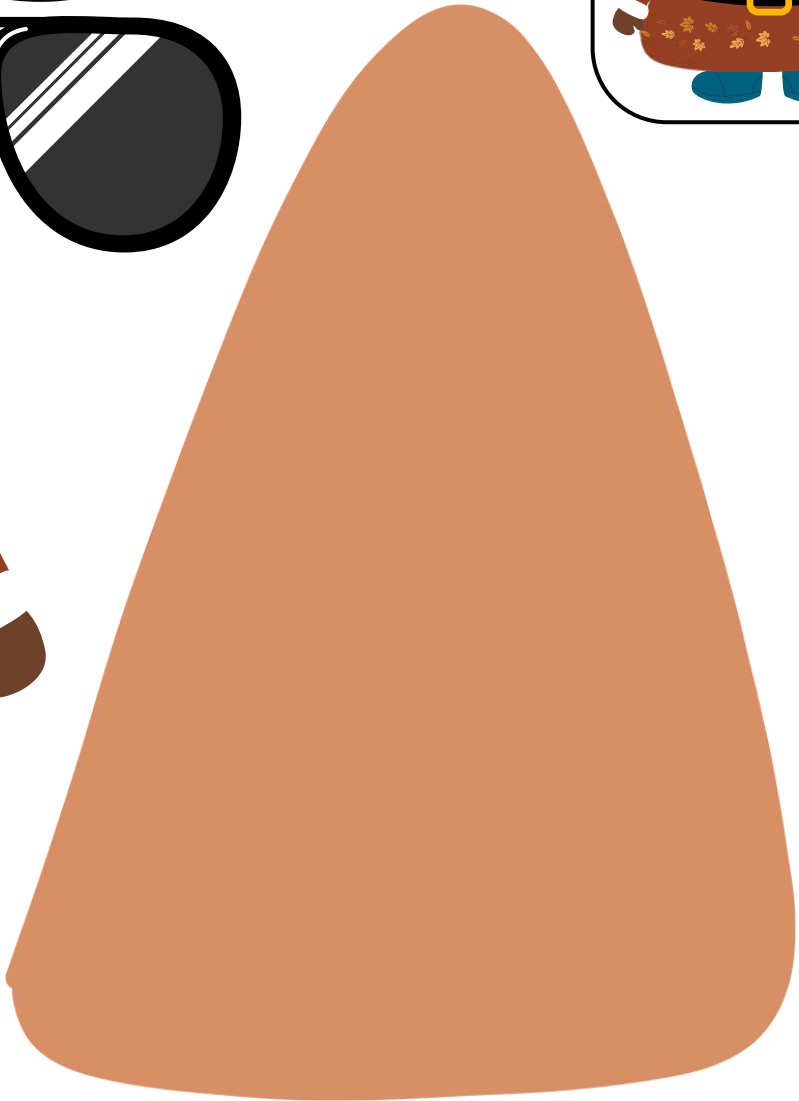
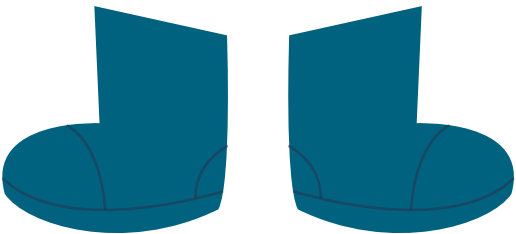
The background is a light brown wooden plank texture. It is decorated with various autumn-themed illustrations: a large red maple leaf on the left, a brown acorn with a black cap, a yellow leaf, a green leaf, a red leaf, and a brown leaf with orange veins. There are also small black berries on orange stems.

INSTRUCTIONS

1. Téléchargez et imprimez le PDF.
2. Découpez les différentes pièces du gnome. (Vous pouvez le coller sur du papier cartonné ou l'imprimer sur du papier cartonné pour le rendre plus solide)
3. Collez les pièces ensemble en utilisant les images ci-dessous comme guide.

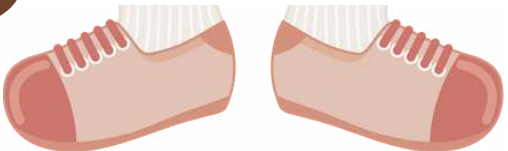
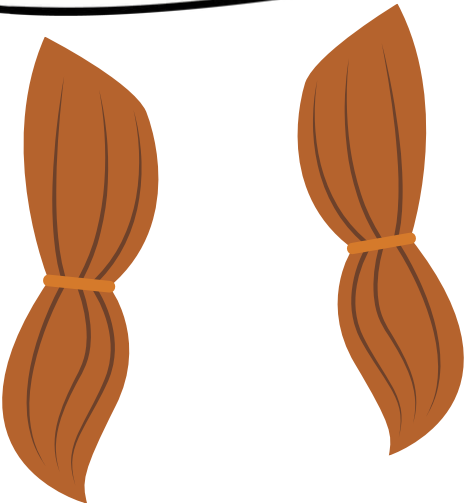
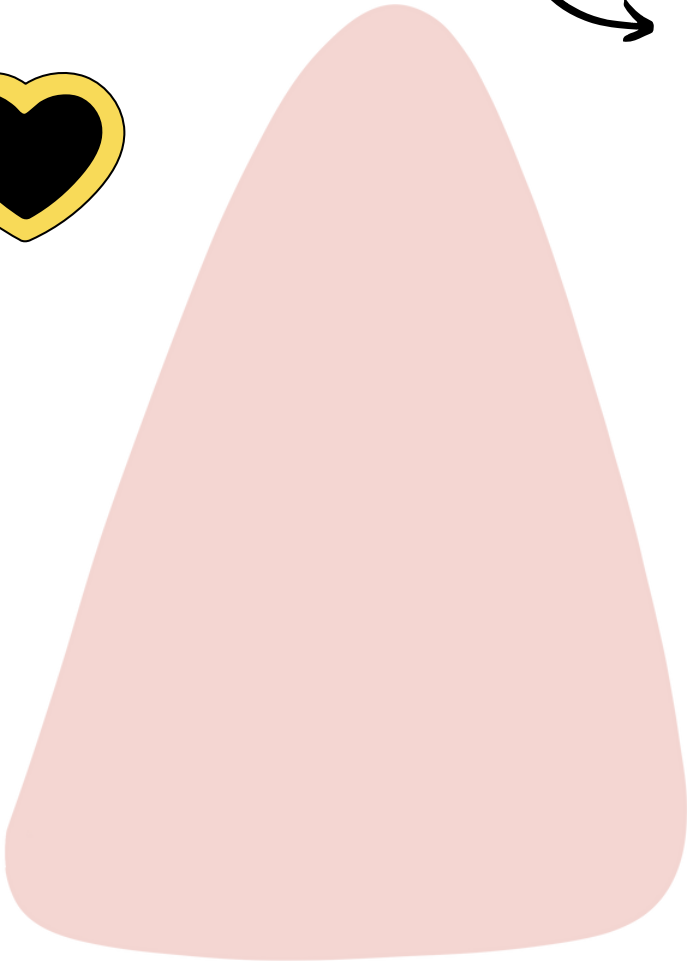
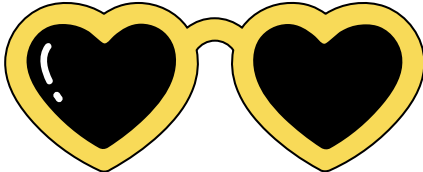
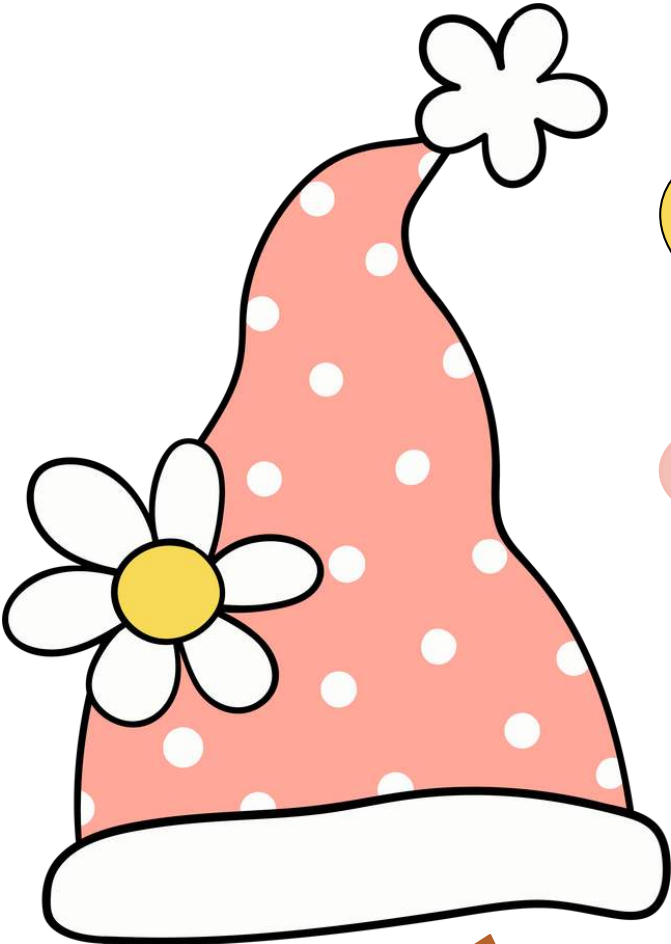


Modèle



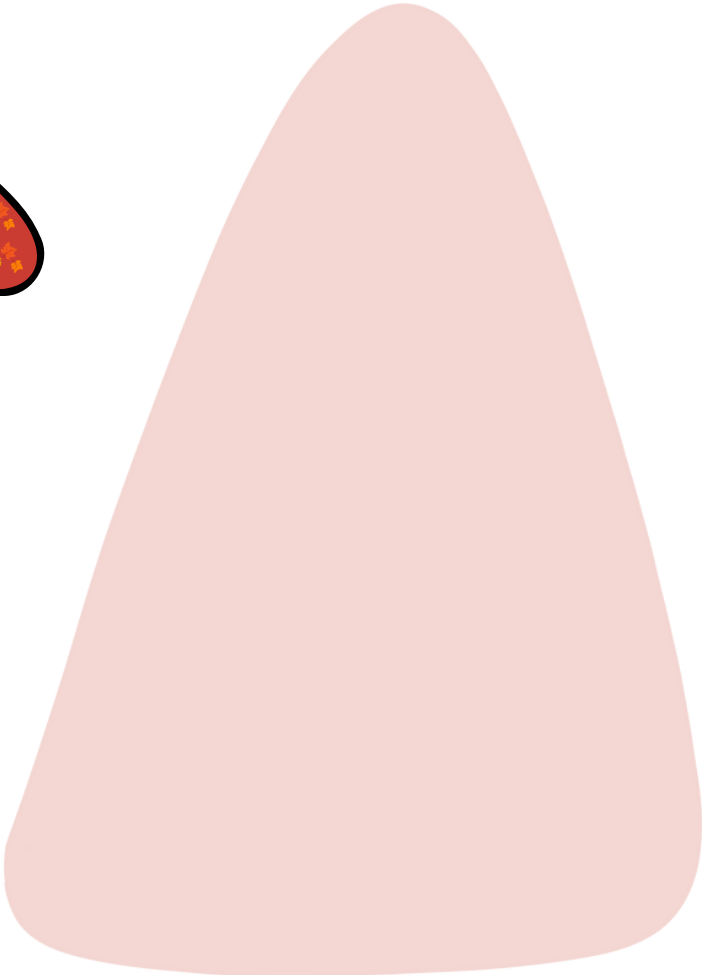
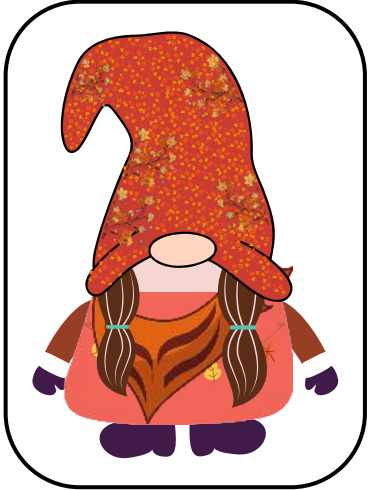
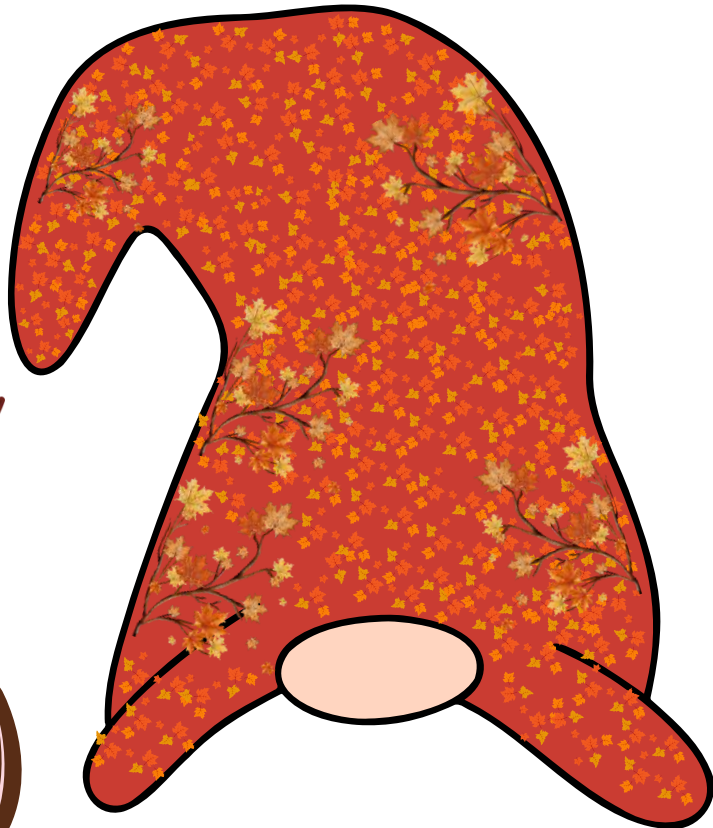
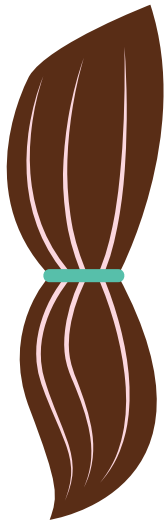
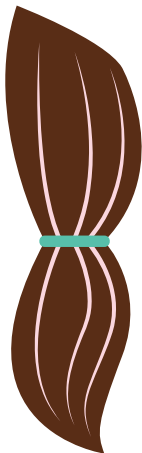


Modèle





Modèle





Modèle

